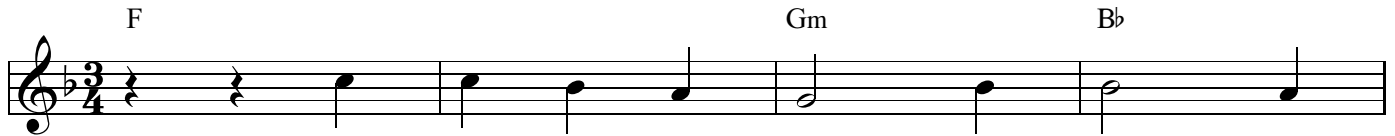


Alleluia! Sing to Jesus

Words by
William C. Dix

Music by
Rowland Hugh Pritchard, 1855

INTRO



VERSE



Al - le - lu - ia! Sing to Je - sus!
Al - le - lu - ia! Not as or - phans
Al - le - lu - ia! Bread of Heav - en,



His the scept - ter, his the throne.
are we left in sor - row now.
you on earth our food and stay!



Al - le - lu - ia! His the tri - umph,
Al - le - lu - ia! He is near us;
Al - le - lu - ia! Here the sin - ful



his the vic - to - ry a - lone.
faith be - lieves, nor ques - tions how.
flee to you from day to day.

REFRAIN

21 Am Dm Gm⁷ C⁷

Hark! the songs of peace - ful Zi - on,
 Though the clouds from sight re - ceived him,
 In - ter - cess - sor, Friend of sin - ners,

25 F Dm⁷ Gm⁷ C^{sus} C

thun - der like a might - y flood:
 when the for - ty days were o'er.
 Earth's re - deem - er, plead for me,

29 F/A Gm F C

"Je - sus out of ev - ery na - tion,
 Shall our hearts for - get his prom - ise:
 where the songs of all the sin - less,

33 F Gm⁷ F C⁷

has re - deemed us by his
 "I am with you ev - er -
 sweep a - cross the crys - tal

Back to Verse (Bar 5) Last Time

36 F Gm B^b F

blood."
 more."
 sea.