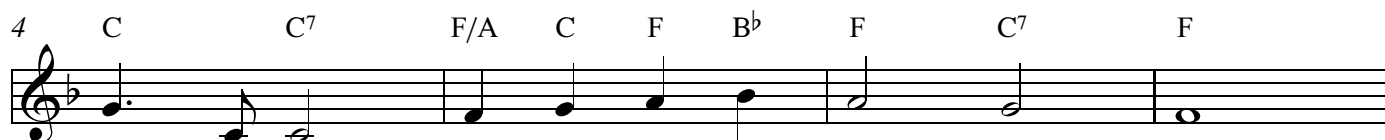
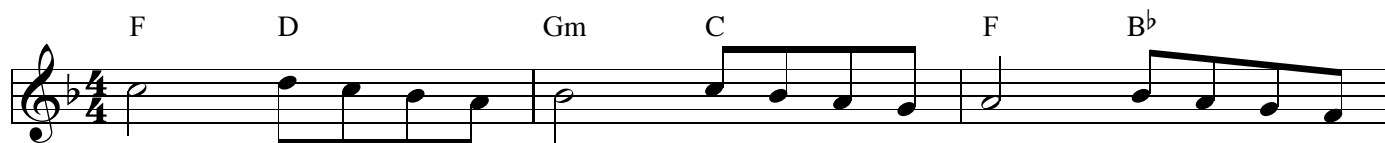


# Angels We Have Heard on High

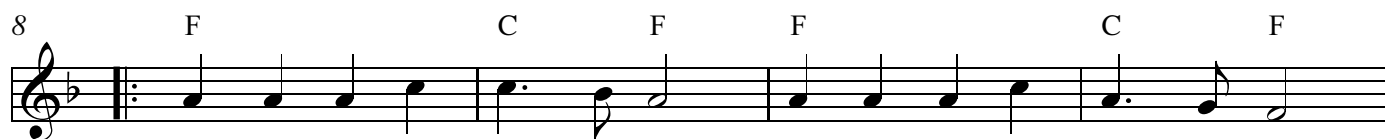
Traditional French Carol

Traditional French Melody

## INTRO



## VERSE

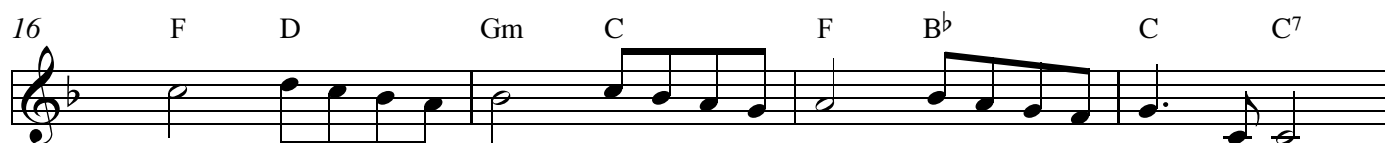


An - gels we have heard on high, sweet - ly sing - ing o'er the plains,  
 Shep - herds, why this ju - bi - lee? Why your joy - ous strains pro - long?  
 Come to Beth - le - hem, and see Him whose birth the an - gels sing;



and the moun - tains in re - ply, ech - o - ing their joy - ous strains.  
 Say what may the ti - dings be, which in - spire your heav'n - ly song?  
 Come a - dore on bend - ed knee Christ the Lord the new - born King.

## REFRAIN



Glo - - - - - ri - a

20 F/A C F B<sup>b</sup> F C

in ex - cel - sis De - - o,

Detailed description: This block contains the first two measures of a musical staff. The key signature has one flat (B-flat). Measure 20 starts with a half note on G4 (F/A chord), followed by a half note on A4 (C chord). Measure 21 starts with a half note on B4 (F chord), followed by a half note on Bb4 (Bb chord), and ends with a half note on C5 (F chord). The lyrics are 'in ex - cel - sis De - - o,'.

22 F D Gm C F B<sup>b</sup> C C<sup>7</sup>

Glo - - - - - ri - a

Detailed description: This block contains measures 22 and 23. Measure 22 starts with a half note on G4 (F chord), followed by a quarter note on A4 (D chord), a quarter note on B4 (D chord), and a quarter note on C5 (D chord). Measure 23 starts with a half note on B4 (Gm chord), followed by a quarter note on Bb4 (C chord), a quarter note on C5 (C chord), a quarter note on B4 (F chord), a quarter note on Bb4 (Bb chord), a quarter note on C5 (C chord), and ends with a half note on C5 (C7 chord). The lyrics are 'Glo - - - - - ri - a'.

26 F/A C F B<sup>b</sup> F C<sup>7</sup> F

in ex - cel - sis De - - - o.

Detailed description: This block contains the final two measures of the piece. Measure 26 starts with a half note on G4 (F/A chord), followed by a half note on A4 (C chord). Measure 27 starts with a half note on B4 (F chord), followed by a half note on Bb4 (Bb chord), and ends with a half note on C5 (C7 chord). The lyrics are 'in ex - cel - sis De - - - o.'.